

Assessment

Lesson 2.3 Summative Assessment Questions

1. Buttons and switches can be used on all types of electric and electronic devices, no matter the size.

- A. True
- B. False

2. Which of these statements is FALSE about polarity?

- A. Polarity is the direction of flow in an electric (or magnetic) field.
- B. Electric polarity has positive and negative poles.
- C. Polarity allows for the attraction and repulsion of charge (like magnets).
- D. Polarity has no effect on how an electrical component works.

3. In this picture of an LED, which "leg" is the negative pole?

- A. The long one
- B. The short one
- C. Both are negative
- D. It depends on how you place it in the circuit



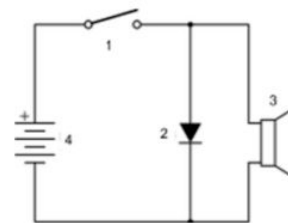
4. Which of these statements is FALSE about piezo buzzer?

- A. A piezo is a type of output that makes sound when current flows through it.
- B. The piezo buzzer in your kit has polarity.
- C. Piezo buzzers are never polarized.
- D. Polarized piezo buzzers have a mark indicating the positive pole.



5. In this circuit diagram, match the component number to the correct letter.

- A. LED
- B. Switch
- C. Power source
- D. Buzzer



6. Which of these is TRUE about the circuit diagram above? (See diagram in question 5)

- A. The current is not flowing.
- B. The buzzer is making a sound.
- C. The LED is on.
- D. There is no power source or battery.

7. In the Power Plant StoryMode level, Kinetic energy from the falling water is transformed by the generator into electrical energy and stored in the battery.

- A. True
- B. False